



NORTHERN
PROCUREMENT
ALLIANCE

ROOFING SYSTEMS AND ASSOCIATED WORKS

1ST JUNE 2021 - 30TH SEPTEMBER 2025

RS4 FRAMEWORK GUIDE



Constructing Excellence
Gold Standard Verified

Improving lives and places
through quality procurement solutions

northernprocurement.org.uk

ABOUT THIS FRAMEWORK

This NPA framework has been developed to provide an efficient, value for money procurement route for local authorities, social landlords and other public sector bodies for the design, supply and installation of roofing systems and associated works in all types of public sector refurbishment and new build projects, including:

- > Multi occupancy residential buildings (low/medium/high rise)
- > Schools
- > Colleges
- > Universities
- > Public offices
- > NHS buildings
- > Police/Fire Authority buildings
- > Other public buildings

The framework scope includes the design, supply, installation and associated works of:

TRADITIONAL FLAT ROOFING SYSTEMS



All suitable for new installations and the removal of existing and replacement of new roof coverings

LIQUID FLAT ROOFING SYSTEMS



PROFILED METAL PITCH ROOFING SYSTEMS



All suitable for new installations and the removal of existing and replacement of new roof coverings

TRADITIONAL PITCHED ROOFING SYSTEMS



MIXED ROOFING PROJECTS COMPRISING A COMBINATION OF THE ABOVE

The tender was carried out in strict accordance with the EU Procurement Directive and UK public sector procurement rules.

Places on the framework were awarded to six different suppliers in three workstreams and across three regional lots for flat roofing and nine different suppliers in one workstream and across three regional lots for pitched roofing.

The term of the framework is from **1st June 2021 to 30th September 2025**. However, individual call off projects can be completed beyond the four-year duration of the framework as long as a contract is in place prior to the framework expiry date.



NPA provides legally compliant frameworks and DPS' which can be used by local authorities, social landlords and other public sector organisations to procure works, products and services for consultancy, compliance, refurbishment and modernisation, energy efficiency and development projects.

The Northern Procurement Alliance brand, which is part of the LHC Procurement Group (LHCPG), offers advice, support and guidance to all public sector organisations across North England, with access to LHCPG's suite of

framework solutions, which are built on more than 50 years of public sector construction procurement expertise and knowhow.

This means no matter how large or small your scope of work requirements are, you will have peace of mind that our extensive range of pre-approved suppliers will deliver your project on time, on budget and to the agreed quality standards.

Northern Procurement Alliance (NPA)

Leeds Office | Office 34, Pure Offices | Turnberry Park Road | Morley, Leeds | LS27 7LE

0113 824 6664

info@northernprocurement.org.uk

Northern Procurement Alliance

WORKSTREAM OPTIONS

Flat Roofing (System Supplier led)

This framework offers access to national System Suppliers and their approved installation contractors. System Suppliers provide an in-house supported survey, design and technical advice service.

Guarantees
15 year product
guarantee across
all ranges.

Workstream 1 - Traditional Flat Roofing

Includes the design, supply and installation of traditional flat roofing products to include (but not be limited to), asphalt, systems, torch on systems such as bituminous built up roofing systems, flame-free systems such as single ply, bituminous systems and GRP.

This may include associated products and works such as flashings, fascia, soffit, weathering and rainwater items.



Workstream 2 - Liquid Flat Roofing

Includes design, supply and installation of liquid flat roofing systems to include, (but not be limited to), polymer modified bitumen emulsions and solutions, glass reinforced resilient unsaturated polyester resins, flexible unsaturated polyester resins, hot applied polymer modified bitumen and polyurethanes.

This may include associated products and works such as flashings, fascia, soffit, weathering and rainwater items.



Workstream 3 - Profiled Metal Roofing

Includes the design, supply and installation of metallic based roofing systems of a tile or sheet type profiled system.

This may include associated products and works such as flashings, fascia, soffit, weathering and rainwater items.



Traditional Pitched Roofing (Contractor led)

This framework offers access to specialist pitched roofing installation contractors who provide a full design and installation service.

Workstream 4 - Traditional Pitched Roofing

Includes the design, supply and installation of traditional pitched roof coverings to include (but not be limited to), plain concrete tiles, interlocking concrete tiles, interlocking resin or slate, plain clay tiles, interlocking clay tiles, natural blue, black and grey slate, fibre cement slate, all to include flashings, fascia, soffit, weathering and rainwater items.

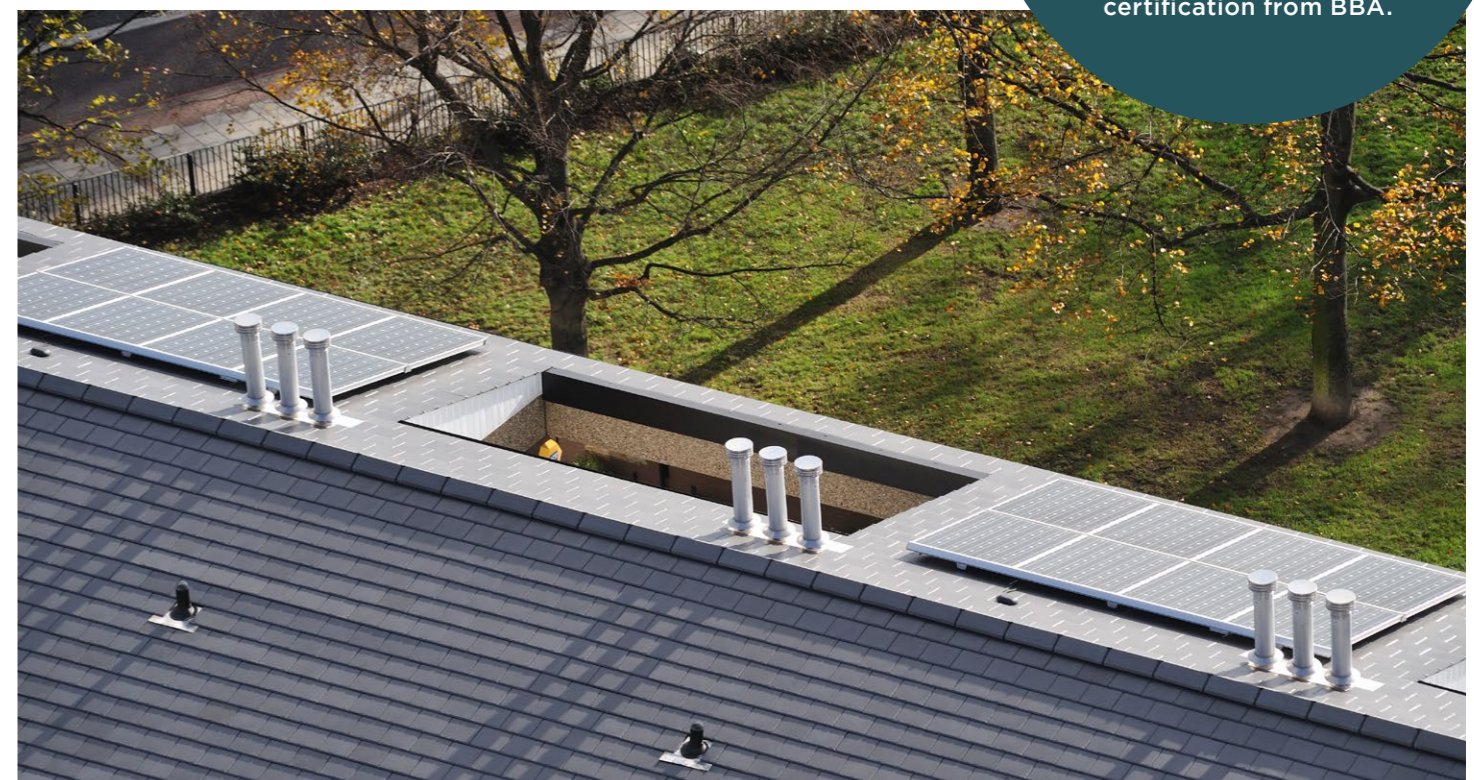


Guarantees

A minimum 15 year product
guarantee across all ranges and
durability in accordance with
BS EN 490 (concrete roof tiles),
BS EN 1304 (clay roof tiles),
BS EN 12326-1 (slate roof tiles)
or equivalent third party
certification from BBA.

Mixed Roofing Super Lot

The Mixed Roofing Super Lot is intended to be used by Clients for projects that have a mix of roofing elements, typically a mix of flat and pitched roofing requirements but could also be metal profile roofs and traditional pitched roofs.






WS1 APPOINTED COMPANIES TRADITIONAL FLAT ROOFING

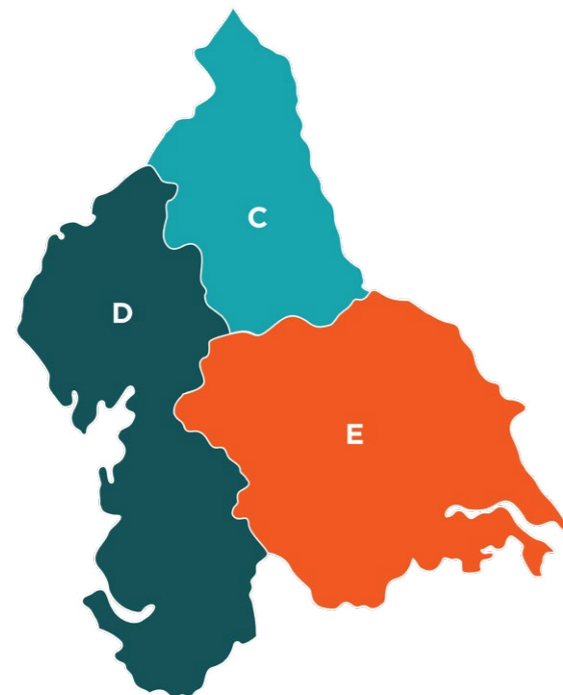
System Supplier		North East England - C	North West England - D	Yorkshire & Humber - E
	Approved Installers	BBR Roofing	BBR Roofing	BBR Roofing
		Central Roofing	Central Roofing	Central Roofing
		Everlast Waterproofing	Everlast Waterproofing	Everlast Waterproofing
		Liquid Roofing	Liquid Roofing	Liquid Roofing
		M&J Group	M&J Group	M&J Group
		MAC Roofing	MAC Roofing	MAC Roofing
	Approved Installers	Dufell Roofing Company	BBR Roofing	BBR Roofing
		Everlast Waterproofing	Complete Roofing Systems	Dufell Roofing Company
		Group Tegula	Everlast Waterproofing	Everlast Waterproofing
		Hodgson Sayers	Hardisty Crn	Hodgson Sayers
		Liquid Roofing	Helix Roofing Contractors	Liquid Roofing
		Springs Roofing	Liquid Roofing	Watershed (Roofing)
	Approved Installers	BBR Roofing	BBR Roofing	BBR Roofing
		Central Roofing	Central Roofing	Central Roofing
		Hodgson Sayers	M&J Group	Central Roofing
		M&J Group	MAC Roofing	Hodgson Sayers
		MAC Roofing	NRA Roofing	M&J Group
		Stoic Roofing	Stoic Roofing	MAC Roofing
	Approved Installers	BBR Roofing	BBR Roofing	BBR Roofing
		Everlast Waterproofing	Everlast Waterproofing	Everlast Waterproofing
		Hodgson Sayers	Hodgson Sayers	Hodgson Sayers
		NRA Roofing	NRA Roofing	Malden Roofing
		Premier Roofing Systems	Premier Roofing Systems	NRA Roofing
		Rio Asphalt & Paving Co	Rio Asphalt & Paving Co	Rio Asphalt & Paving Co
	Approved Installers	BBR Roofing	BBR Roofing	BBR Roofing
		Everlast Waterproofing	Everlast Waterproofing	Everlast Waterproofing
		Fulwood Roofing Services	Fulwood Roofing Services	Fulwood Roofing Services
		NRA Roofing	NRA Roofing	NRA Roofing
		Stoic Roofing	Stoic Roofing	Stoic Roofing
		Tucker And Tunstalls	Tucker And Tunstalls	Tucker And Tunstalls

WS2 APPOINTED COMPANIES LIQUID FLAT ROOFING

System Supplier		North East England - C	North West England - D	Yorkshire & Humber - E
	Approved Installers	BBR Roofing	BBR Roofing	BBR Roofing
		Central Roofing	Central Roofing	Central Roofing
		Everlast Waterproofing	Everlast Waterproofing	Everlast Waterproofing
		Liquid Roofing	Liquid Roofing	Liquid Roofing
		M&J Group	M&J Group	M&J Group
		MAC Roofing	MAC Roofing	MAC Roofing
	Approved Installers	Dufell Roofing CompanyEverlast Waterproofing	BBR Roofing	BBR Roofing
		Group Tegula	Complete Roofing Systems	Dufell Roofing CompanyEverlast Waterproofing
		Hodgson Sayers	Everlast Waterproofing	Waterproofing
		Hodgson Sayers	Hardisty Crn	Hodgson Sayers
		Liquid Roofing	Helix Roofing Contractors	Liquid Roofing
		Springs Roofing	Liquid Roofing	Watershed (Roofing)
	Approved Installers	BBR Roofing	BBR Roofing	BBR Roofing
		Central Roofing	Central Roofing	Central Roofing
		Hodgson Sayers	M&J Group	Central Roofing
		M&J Group	MAC Roofing	Hodgson Sayers
		MAC Roofing	NRA Roofing	M&J Group
		Stoic Roofing	Stoic Roofing	MAC Roofing
	Approved Installers	BBR Roofing	BBR Roofing	BBR Roofing
		Everlast Waterproofing	Central Roofing	Everlast Waterproofing
		Hodgson Sayers	Everlast Waterproofing	Hodgson Sayers
		Integral Roofing	Hodgson Sayers	Integral Roofing
		NRA Roofing	NRA Roofing	NRA Roofing
		Rio Asphalt & Paving Co	Rio Asphalt & Paving Co	Rio Asphalt & Paving Co
	Approved Installers	Barclay Roofing Limited	BBR Roofing	BBR Roofing
		BBR Roofing	Complete Roofing Systems	Complete Roofing Systems
		Everlast Waterproofing	Everlast Waterproofing	Cure Roofing
		Group Tegula	Hardisty Crn	Everlast Waterproofing
		Liquid Roofing	Liquid Roofing	Group Tegula
		N.T. Sweeting Roofing Contractors	Specialised Group	Liquid Roofing

WS3 APPOINTED COMPANIES PROFILED METAL ROOFING

System Supplier	North East England - C	North West England - D	Yorkshire & Humber - E
	BBR Roofing	BBR Roofing	BBR Roofing
	Central Roofing	Central Roofing	Central Roofing
	Everlast Waterproofing	Everlast Waterproofing	Everlast Waterproofing
	Liquid Roofing	Liquid Roofing	Liquid Roofing
	M&J Group	M&J Group	M&J Group
	MAC Roofing	MAC Roofing	MAC Roofing
	BBR Roofing	BBR Roofing	BBR Roofing
	Central Roofing	Central Roofing	Central Roofing
	Hodgson Sayers	M&J Group	Hodgson Sayers
	M&J Group	MAC Roofing	M&J Group
	MAC Roofing	NRA Roofing	MAC Roofing
	Stoic Roofing	Stoic Roofing	NRA Roofing
	BBR Roofing	BBR Roofing	BBR Roofing
	Cambridge Flat Roofing	Cambridge Flat Roofing	Cambridge Flat Roofing
	Central Roofing	Central Roofing	Central Roofing
	Everlast Waterproofing	Everlast Waterproofing	Everlast Waterproofing
	Hodgson Sayers	Hodgson Sayers	Hodgson Sayers
	Milestone Contracting	Milestone Contracting	Milestone Contracting



Regional Areas:
■ C - North East
■ D - North West
■ E - Yorkshire and the Humber

WS4 APPOINTED COMPANIES PITCHED ROOFING

Tees Valley & Durham - C1	Northumberland & Tyne & Wear - C2	East Yorkshire & Northern Lincolnshire - E1
Abbeymill Homes	Abbeymill Homes	Abbeymill Homes
Axis Europe	Axis Europe	Axis Europe
Everlast Waterproofing	Everlast Waterproofing	Everlast Waterproofing
Hugh L S Mcconnell	Hugh L S Mcconnell	M&J Group
John Flowers	John Flowers	MAC Roofing
M&J Group	M&J Group	NRA Roofing
North Yorkshire - E2	South Yorkshire - E3	West Yorkshire - E4
Abbeymill Homes	Abbeymill Homes	Abbeymill Homes
Axis Europe	Axis Europe	Axis Europe
Everlast Waterproofing	Everlast Waterproofing	Everlast Waterproofing
John Flowers	John Flowers	John Flowers
M&J Group	M&J Group	M&J Group
MAC Roofing	NRA Roofing	MAC Roofing
Cumbria - D1	Greater Manchester - D3	Lancashire - D4
Abbeymill Homes	Abbeymill Homes	Abbeymill Homes
Axis Europe	Axis Europe	Axis Europe
Everlast Waterproofing	Everlast Waterproofing	Everlast Waterproofing
Hugh L S Mcconnell	Hugh L S Mcconnell	Hugh L S Mcconnell
John Flowers	M&J Group	M&J Group
M&J Group	MAC Roofing	MAC Roofing
Cheshire - D6	Merseyside - D7	
Abbeymill Homes	Abbeymill Homes	
Axis Europe	Axis Europe	
Everlast Waterproofing	Everlast Waterproofing	
Hugh L S Mcconnell	Hugh L S Mcconnell	
M&J Group	M&J Group	
MAC Roofing	MAC Roofing	

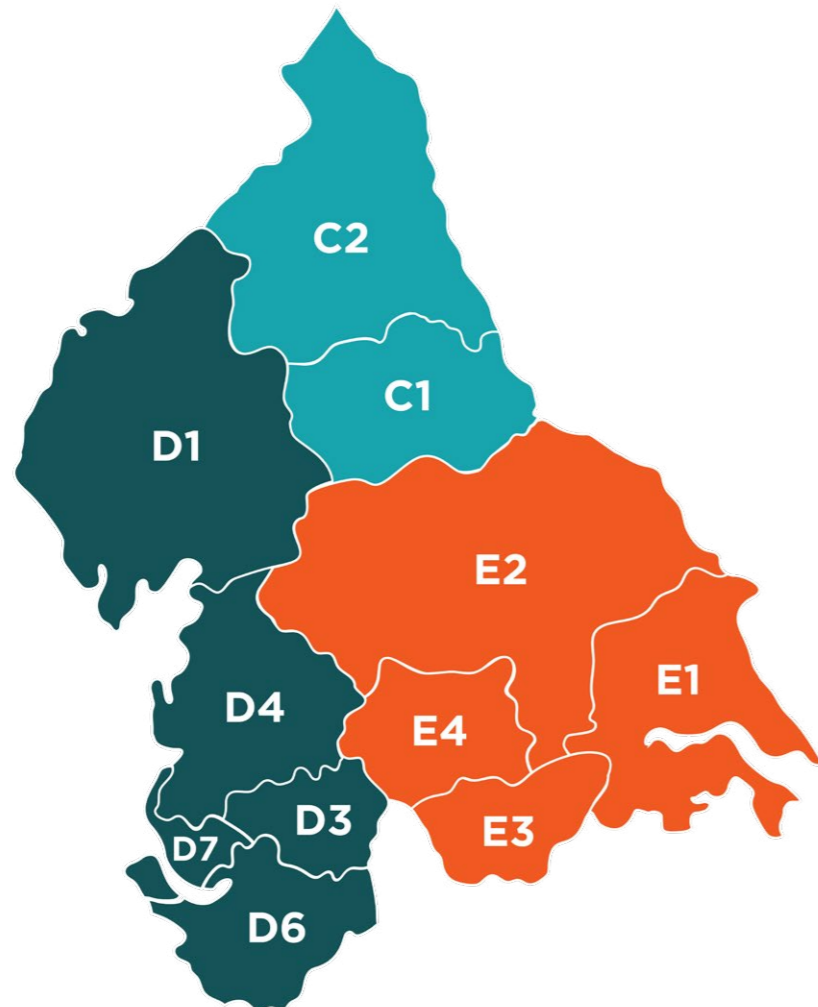
APPOINTED COMPANIES

MIXED ROOFING SUPER LOT

Tees Valley & Durham - C1	Northumberland & Tyne & Wear - C2	East Yorkshire & Northern Lincolnshire - E1
Everlast Waterproofing	Everlast Waterproofing	Everlast Waterproofing
M&J Group	M&J Group	M&J Group
--	--	MAC Roofing
--	--	NRA Roofing
North Yorkshire - E2	South Yorkshire - E3	West Yorkshire - E4
Everlast Waterproofing	Everlast Waterproofing	Everlast Waterproofing
M&J Group	M&J Group	M&J Group
MAC Roofing	NRA Roofing	MAC Roofing

Cumbria - D1	Greater Manchester - D3	Lancashire - D4
Everlast Waterproofing	Everlast Waterproofing	Everlast Waterproofing
M&J Group	M&J Group	M&J Group
--	MAC Roofing	MAC Roofing

Cheshire - D6	Merseyside - D7
Everlast Waterproofing	Everlast Waterproofing
M&J Group	M&J Group
MAC Roofing	MAC Roofing



Regional Areas:

- C1 - Tees Valley & Durham
- C2 - Northumberland & Tyne & Wear
- D1 - Cumbria
- D3 - Greater Manchester
- D4 - Lancashire
- D6 - Cheshire
- D7 - Merseyside
- E1 - East Yorkshire & Northern Lincolnshire
- E2 - North Yorkshire
- E3 - South Yorkshire
- E4 - West Yorkshire

EVALUATION CRITERIA

A single stage open tender process was used. The following qualification criteria were used to assess the suitability of applicants.

Financial due diligence

Applicants were assessed on their annual turnover for the last 3 years and checked via Credit Safe. The results of this check were assessed on a pass/fail basis.

The minimum annual turnover requirements for all lots within this Framework is £500,000, this being twice the anticipated average value of projects called off this Framework Agreement.

Accreditations and certifications

Applicants were required to provide evidence that they have in place the relevant **health and safety, environmental, equality and quality systems** listed below to be considered eligible for the Framework.

Health and Safety

The Applicant must hold a UKAS (or equivalent), accredited independent third party certificate of compliance in accordance with BS ISO 45001 (or equivalent) or have, within the last 12 months, successfully met the assessment requirements of a construction-related scheme in registered membership of the Safety Schemes in Procurement (SSIP) forum.

Environmental Management

UKAS (or equivalent) accredited independent third-party certificate of compliance with BS EN ISO 14001 (or equivalent) or a valid EMAS (or equivalent) certificate.

Compliance with Equality Act 2010

Applicants will be required to evidence through a number of confirmatory statements they are compliant with the Equality Act 2010 and have measures in place to promote equality and diversity within their organisation.

Quality Management

UKAS (or equivalent) accredited independent third-party certificate of compliance in accordance with BS EN ISO 9001 (or equivalent).

Durability and Guarantee Requirements

Applicants will be required to confirm they will offer the relevant durability requirements and guarantees for the products used.

EVALUATION CRITERIA

Minimum Insurance Cover

Applicants are required to have the minimum levels of insurance to be considered throughout the duration of the framework and any corresponding call offs have expired.

> Employers (Compulsory) Liability Insurance	£5,000,000
> Public Liability Insurance	£2,000,000
> Professional Indemnity Insurance	£2,000,000
> Product Liability Insurance	£2,000,000

LHCPG Lifetime Values

In addition to providing our partners with competitively tendered Framework Agreements for building works, goods, and services NPA is committed to delivering tangible social value and community benefits that meet local and regional needs. NPA work with our partners and appointed companies to ensure that wherever possible projects delivered using our Frameworks leave a social legacy.

NPA has aligned its activities to create the LHCPG Lifetime Values, which uses the four key value categories as identified in the value toolkit by the Construction Innovation Hub (CIH). CIH has been established by Government to progress innovation in the construction sector.

During the life of the Framework NPA will work with partners and appointed companies to promote, identify, implement, and monitor the impact of these value categories, which could be supported by social value and community benefit initiatives alongside the delivery of the works or service contracts in meeting local/regional needs.

Quality 70%

Technical Capability Questions

Bidder's technical capability questions, split between technical ability, management, support and accreditations/quality management **50%**

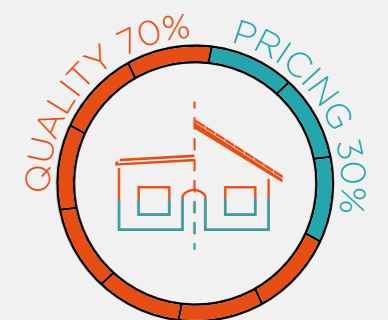
Regional Capability

Split between supporting and meeting local regional needs and contributions to delivering local social value in accordance with LHCPG's 'Lifetime Values' **20%**

Price 30%

Profit & Overhead and Preliminaries
Scenario Pricing and Regional uplift

10%
20%



CALL-OFF ADWARD OPTIONS

Flat Roofing

There are three options available to the Client:

Mini Competition between System Suppliers, each bid comprising a System Supplier and each System Supplier's single Approved Installation Contractors.

OR

Direct Selection of a System Supplier with further competition between Approved Installation Contractor

OR

Direct Selection of an Appointed Company and Approved Installation Contractor without further competition

Traditional Pitched Roofing

The framework allows the client the option of:

Direct Award without further competition, where all terms and conditions of the call-off project are within the terms and conditions of the framework

OR

Mini Competition, where terms and conditions of the call-off may vary or be modified from the framework or at the choice of the Client.

Mixed Roofing Super Lot

The only call-off option is **Mini Competition**.

When calling off projects, clients can use any one of a range of standard forms of building contract including JCT/SBCC, NEC/NEC4, ACE, PPC, TPC, FAC1, or their own in-house agreement.

Eligibility

NPA is a not-for-profit organisation, governed by public law and a central purchasing body providing procurement services. Over 200 publicly funded organisations throughout England use NPA frameworks to procure works, goods and services to: construct, refurbish and maintain social housing, schools and public buildings. Details of those contracting authorities identified are listed at: www.northernprocurement.org.uk/who-we-work-with/

Accessing the Framework

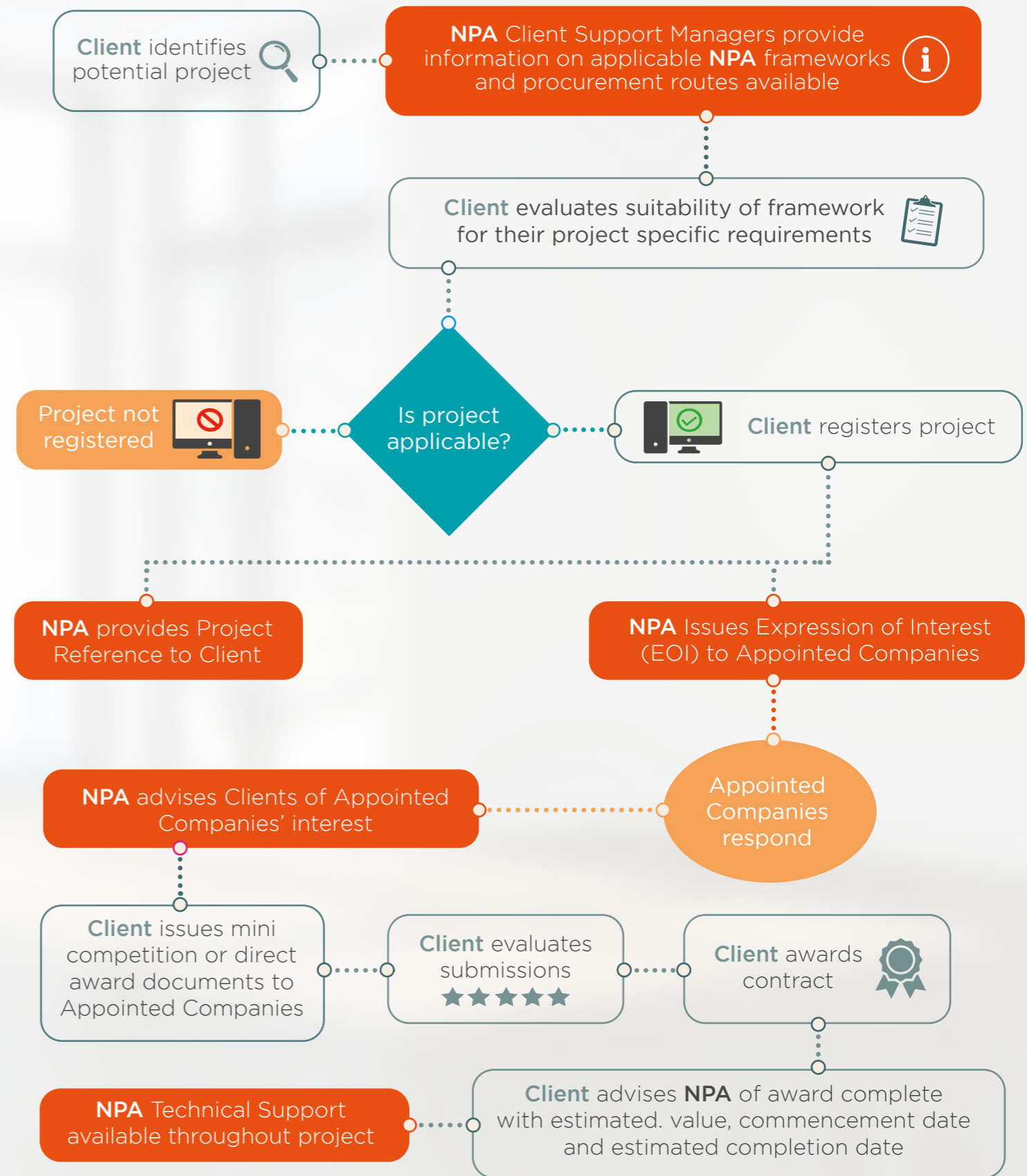
Companies appointed to NPA frameworks are required to pay a small percentage ('the levy') of the total value of every invoice submitted to clients and to submit quotations to clients that are inclusive of the levy. There are no access fees in order to browse our frameworks. As a not-for-profit organisation, NPA returns surplus levy income to our clients to support social value initiatives in the local communities they serve.

General Terms and Conditions

LHCPG uses the FAC-1 standard form of contract to manage our frameworks. The LHCPG pro forma, which should be read in conjunction with the FAC-1 in published form, details the terms and conditions that govern the operation of the framework, including the procedures to call off projects under

the framework. A free copy of the LHCPG proforma is available upon request. The FAC-1 in standard published form can be purchased at a negotiated rate from ACA, by emailing office@acarchitects.co.uk and quoting discount code reference: LHCFAC2516102017.

THE PROCESS OF USING OUR FRAMEWORK





NORTHERN
PROCUREMENT
ALLIANCE



0113 824 6664



www.northernprocurement.org.uk



info@northernprocurement.org.uk



Northern Procurement Alliance

In association with:

LHC

PROCUREMENT GROUP